

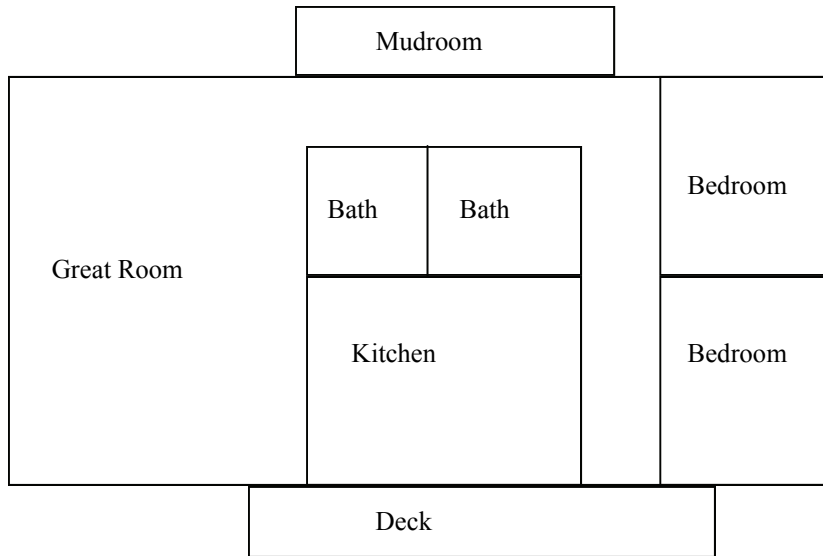


Cabin Floor Plans

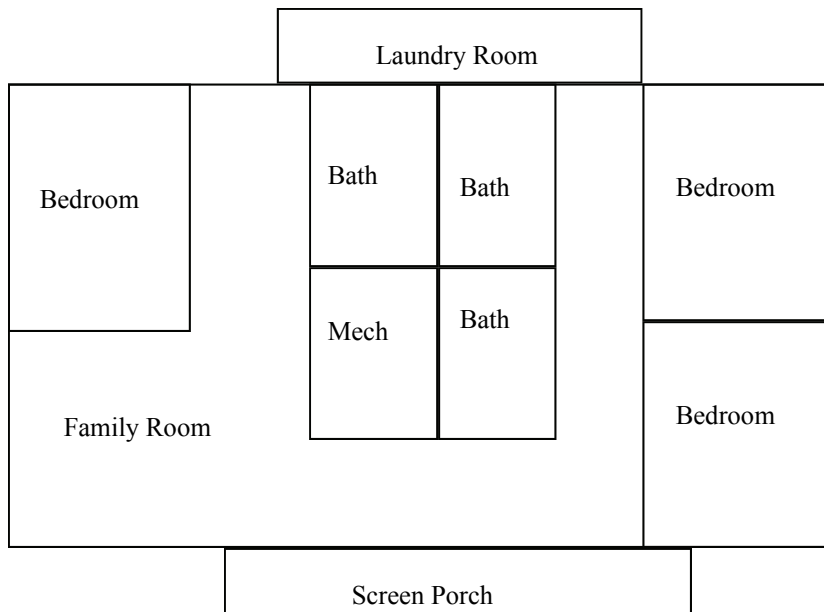
North Camp Cabins

Bridge Builder - Sleeps 24. Five bedroom, five bathroom, laundry with washer and dryer, screen porch, deck, kitchen with dishwashers, forced air and lower level radiant heat, air condition, bi-level, handicapped accessible, great room with fireplace, feeds up to 50 people. Upstairs Master Bed sleeps 2, queen bed. Upstairs bedroom sleeps 4. One double/twin bunk and one twin bed. All lower level bedrooms sleep 6. Each bedroom has 2 double twin bunks. (2 sleep on bottom of bunk and one sleeps on top)

Upper Level



Lower Level



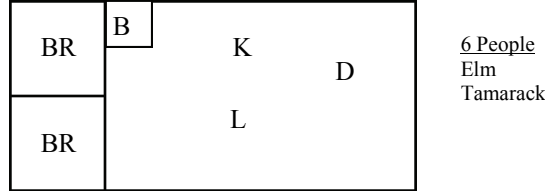


Cabin Floor Plans Con't

North Camp Cabins Con't

Key
 K- Kitchen
 L- Living room
 D- Dining room
 BR- Bed room
 B- Bathroom
 P- Porch

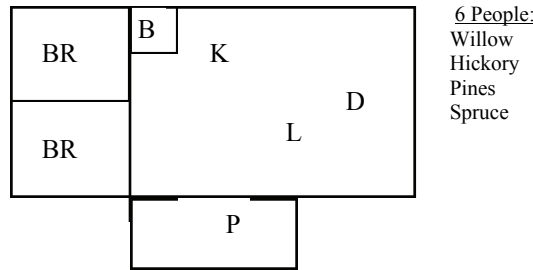
Elm & Tamarack: Sleeps 6, two bedroom, shower/tub combo, kitchen, two bunk beds in one bedroom , two twin beds in master, deck



Pines: Handicapped accessible with ramps and air-conditioning. Sleeps 6, two bedroom, one queen bed in one bedroom, two bunk beds in one bedroom, bathroom, kitchen, screen porch.

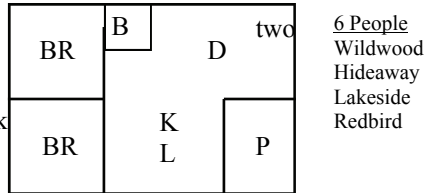
Willow: Sleeps 6, two bedroom, two twin beds in master bedroom, two bunk beds in other bedroom, bathroom, kitchen, screen porch.

Hickory & Spruce: Sleeps 6, two bedroom, one queen bed in one bedroom, two bunk beds in one bedroom kitchen, fireplace, bathroom, screen porch.



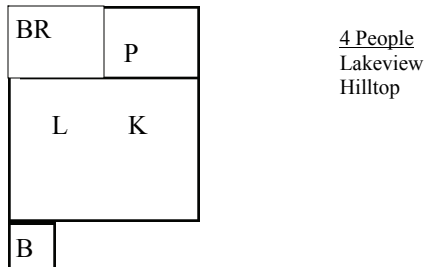
Lakeside, Wildwood: Sleeps 6, two bedroom, two bunk beds in one bedroom, two twin beds in master, bathroom, kitchen, screen porch

Hideaway, Redbird: Sleeps 6, two bedroom. Hideaway-2 bunk beds in one bedroom. One Double-twin bunk in other bedroom. Redbird-2 twin beds in master and one double twin-bunk in other bedroom plus a futon in living room. Screen porch on both cabins.

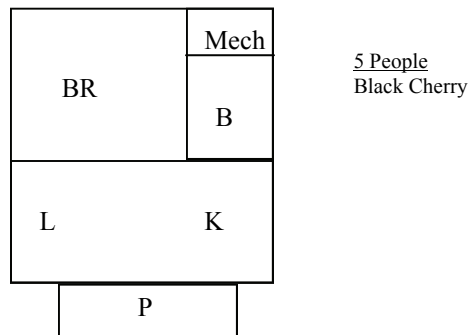


Hilltop & Lakeview:

Sleeps 4, one bed room, pop-up trundle bed (2 twin beds) in living area, one bunk bed in bedroom, bathroom, screen porch, fantastic lake view.



Black Cherry: Sleeps 5, one bedroom. Double/twin bunk in bedroom. Double futon in Living. Bathroom



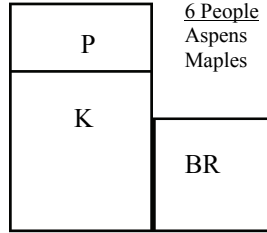
Key
 K- Kitchen
 L- Living room
 D- Dining room
 BR- Bed room
 B- Bathroom

Cabin Floor Plans Con't



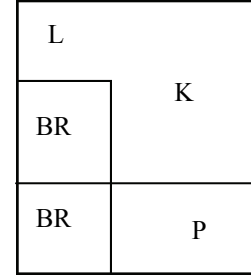
North Camp Cabins Con't

Aspens, Maples: Sleeps 6, one bedroom, double size futon in living area, 2 bunk beds in bedroom. screen porch, bathrooms nearby.



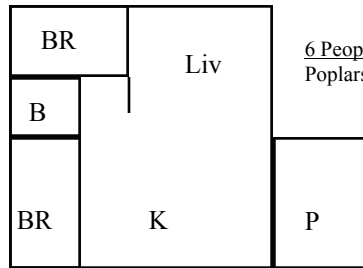
6 People
 Aspens
 Maples

Oaks: Sleeps 6, two bedroom, one set of bunk beds in each bedroom, one double futon in living area, screen porch, bathrooms nearby, gorgeous lake view



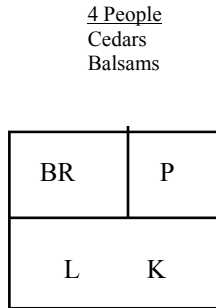
6 People
 Oaks

Poplars: Sleeps 6-7, two bedroom, two bunk beds in one bedroom, and a double/twin bunk in other bedroom, screen porch, full bathroom, beautiful lake view.



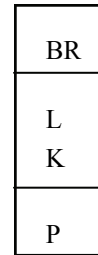
6 People
 Poplars

Balsams, Cedars, Hemlocks: Sleeps 4, one bedroom, double size futon in living area. One bunk bed in bedroom, screen porch, bathrooms nearby, lake view.

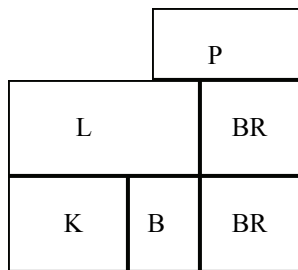


4 People
 Cedars
 Balsams

4 People
 Hemlocks



Sunset: Sleeps 6, two bedrooms, one bedroom has two sets of bunk beds, other bedroom has a double/twin bunk, full bath, screen porch, gorgeous lake view on private lake.



6 People
 Sunset

Tent Sites:

Tent sites are located in North Camp. Each site sleeps up to 4 people. Water supply and bathrooms are nearby. You must bring your own camping gear including dishes and coolers. There is no refrigeration provided. Tents only are allowed. No RV's.

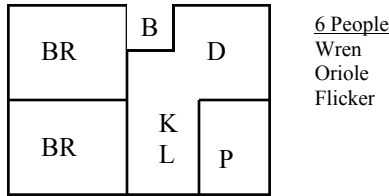
Key
 K- Kitchen
 L- Living room
 D- Dinning room
 BR- Bed room
 B- Bathroom
 P- Porch

Cabin Floor Plans Con't

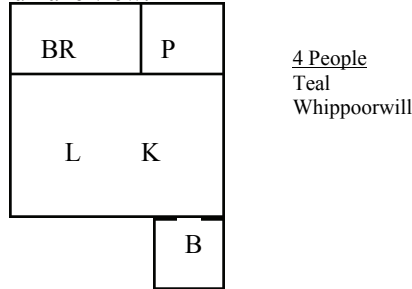


South Camp Cabins

Flicker, Oriole, Wren: Sleeps 6, two bedrooms, one bedroom has two bunk beds , the other has two twin beds, bathroom, kitchen, screen porch, beautiful lake view.

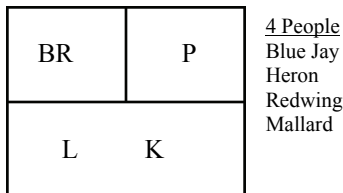


Teal & Whippoorwill: Sleeps 4, one bedroom, the bedroom has one bunk bed, bathroom, one pop-up trundle bed (2 twin beds) in living area, screen porch, beautiful lake view.



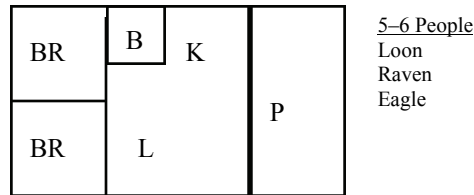
Blue Jay, Heron, Redwing, Mallard:

Sleeps 4, one bedroom with one bunk bed, double size futon in living area, screen porch, bathrooms nearby, lake view.

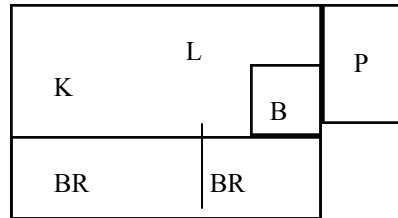


Loon , Raven, Eagle

Sleeps 5-6 people, two bedroom, double twin bunk in each bedroom, half bath, showers near by, porch with windows & screen, lake view.



Owl: Sleeps 6-7, two bedroom, two bunk beds in one bedroom, double/twin bunk in the other bedroom, screen porch, full bathroom, beautiful lake view.



Island: Sleeps 9, Three bedroom, two sets of twin bunk beds in one of the bedrooms, one double twin bunk bed in one of the bedrooms, one bedroom with 2 twin beds, large window screen porch, cabin on island, half bath, showers nearby. Virtual 360° lake view!

